

Fast facts

GENDER INEQUALITY



EMPLOYMENT

Women are still earning vastly less than men:

According to WGEA the gender pay gap is 16.2% or an average annual salary difference of

\$15,457



International Women's Day

#BalanceforBetter

COMPLAINTS

Sexual harassment is still an issue that predominantly affects women.

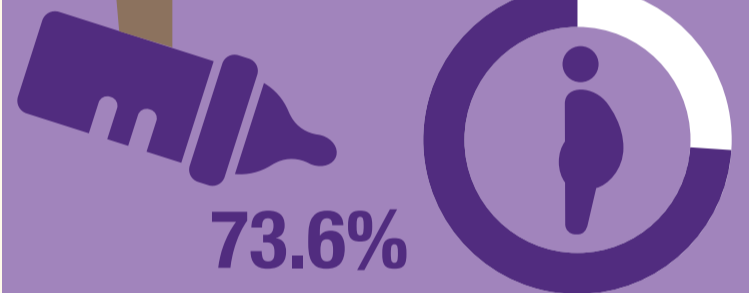
More than 83% of complaints in 2017-18 were from women.

Three quarters of part-time positions are held by women but only 6.4% of management positions are part time.



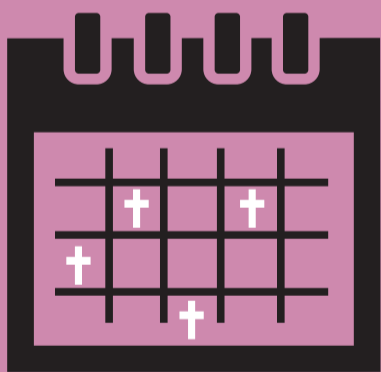
6.4%
Part-time managers

Nearly three quarters (73.6%) of complaints about discrimination because of being a parent came from women.



73.6%

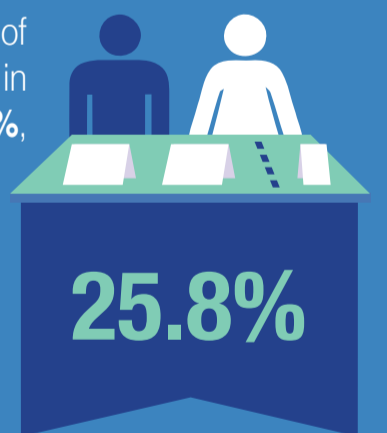
FAMILY VIOLENCE



On average, **one woman a week** is murdered by her current or former partner.

LEADERSHIP

The percentage of female directors in Australia is **25.8%**, up 0.9% on 2016-17.



25.8%

3x

Women in Australia are nearly three times more likely than men to experience violence at the hands of a partner.

In federal parliament just **6 out of 30** ministers are women (that's one less than 2015).



Victorian Equal Opportunity & Human Rights Commission